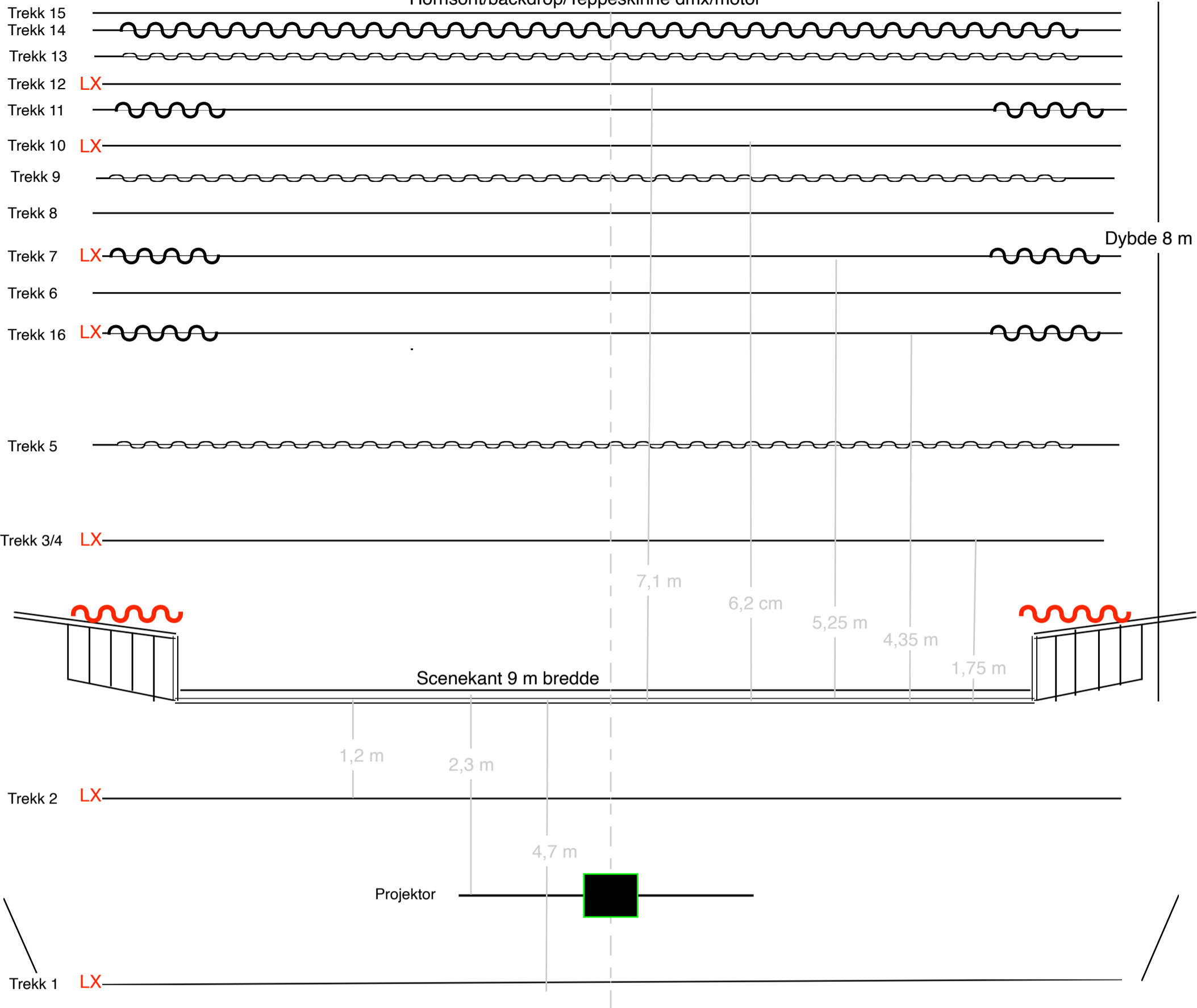


Horisont/backdrop/Teppeskinne dmx/motor



SWL: Maks last jevn fordelt - A: max under wire - B: max mellom wire - C: max mellom wire - D: max fri ende

Trekk 1: SWL: 320kg A:210kg B:225kg C: 200kg D: 70kg	Trekk 9: SWL: 320kg A: 150kg B: 50kg C: 100kg D: 50kg
Trekk 2: SWL: 320kg A:210kg B:225kg C: 200kg D: 70kg	Trekk 10: SWL: 500kg A: 100kg B: 50kg C: 50kg D: 50kg
Trekk 3/4: SWL: 500kg A:250kg B:310kg C:40kg/m D: xxkg	Trekk 11: SWL: 320kg A: 150kg B: 50kg C: 100kg D: 50kg
Trekk 5: SWL: 320kg A: 150kg B: 50kg C: 100kg D: 50kg	Trekk 12: SWL: 500kg A: 100kg B: 50kg C: 50kg D: 50kg
Trekk 6: SWL: 500kg A: 100kg B: 50kg C: 50kg D: 50kg	Trekk 13: SWL: 320kg A: 150kg B: 25kg C: 25kg D: 25kg
Trekk 7: SWL: 320kg A: 150kg B: 50kg C: 100kg D: 50kg	Trekk 14: SWL: 320kg A: 150kg B: 25kg C: 25kg D: 25kg
Trekk 8: SWL: 320kg A: 150kg B: 25kg C: 25kg D: 25kg	Trekk 15: SWL: 320kg A: 150kg B: 25kg C: 25kg D: 25kg
	Trekk 16: SWL: 740kg A: 185kg B: 50kg C: 100kg D: 50kg

Hazer: MDG ATMe - Addr: 510

Mikser: GrandMA 2 Light

Salslys: univers 6. -dmx: 501

Max trim LX scene: 6,3 meter?

DMX FOH-scene: nettverk/sACN

Dimmere: DMX 1-50, universe 1

Max trim LX front: 6,3 meter?



6 x Martin Mac Viper performance 16 bit extended



4 x Robe Robin LEDwash 300 "mode 2"



2 x Robe 1200 Wash Tungsten "Mode 1"



6 x Arri T2 pole/ Fresnell 2KW



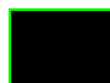
2 x Robe Robin plasmaspot 300 "Mode 1"



8 x Source four profil 26 grader



10 x Diamond 19CC "mode std"



Projektor, Epson laser 12 000